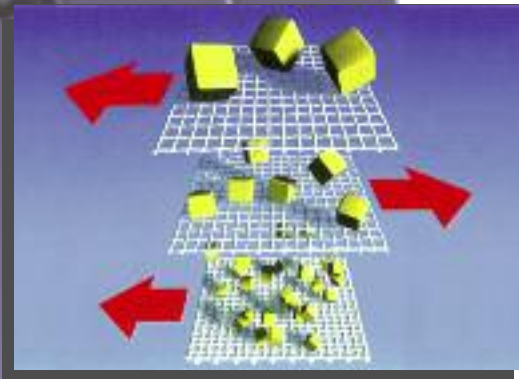


# MONODUR<sup>®</sup>

## Screen Fabrics

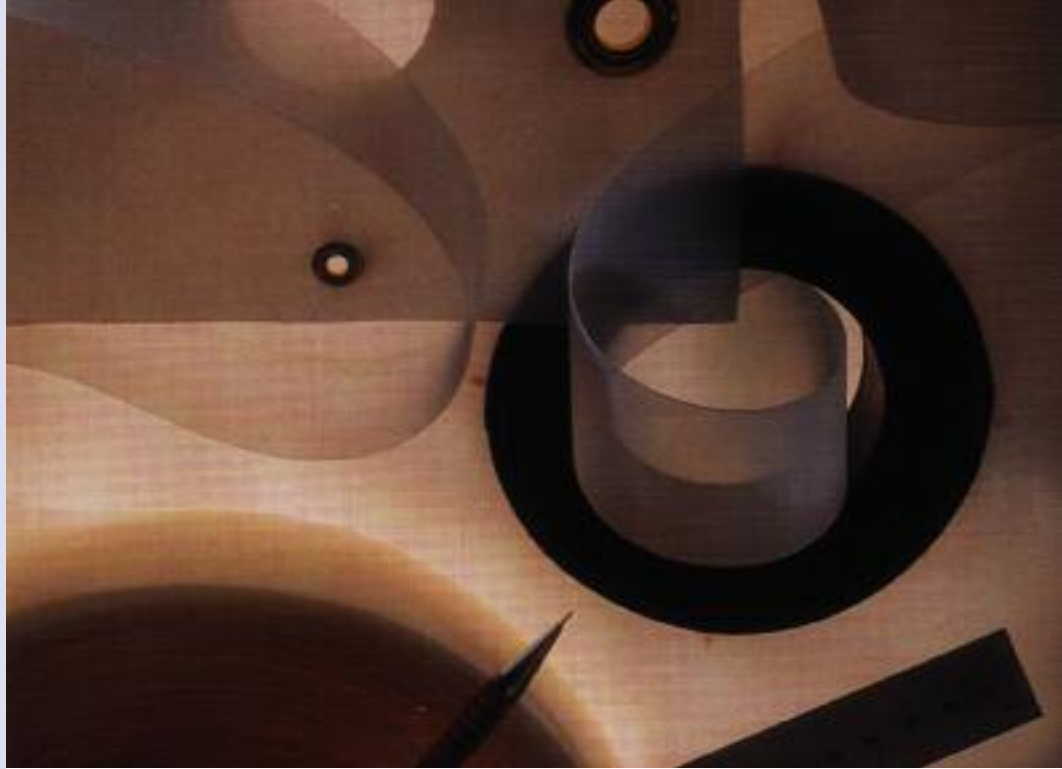


- Screening
- Filtering
- Straining
- Classifying



INDUSTRIAL FABRICS CORPORATION  
*Weaving Excellence Into A World Of Products*





## Weaving Excellence Into A World of Products

For more than three decades Industrial Fabrics Corporation (IFC) has been the leader in precision woven screen fabrics.

With research and production facilities on two continents, we literally span the globe to ensure optimum production conditions, assuring the highest standard of manufacturing excellence.

We believe in partnering with our business customers to produce innovative solutions and products for today and beyond.

“Weaving excellence into a world of products” is more than our slogan, it’s our commitment.



## Exceptional Durability — Even In The Most Demanding Applications

MONODUR® screen fabrics are utilized successfully all over the world in industries such as:

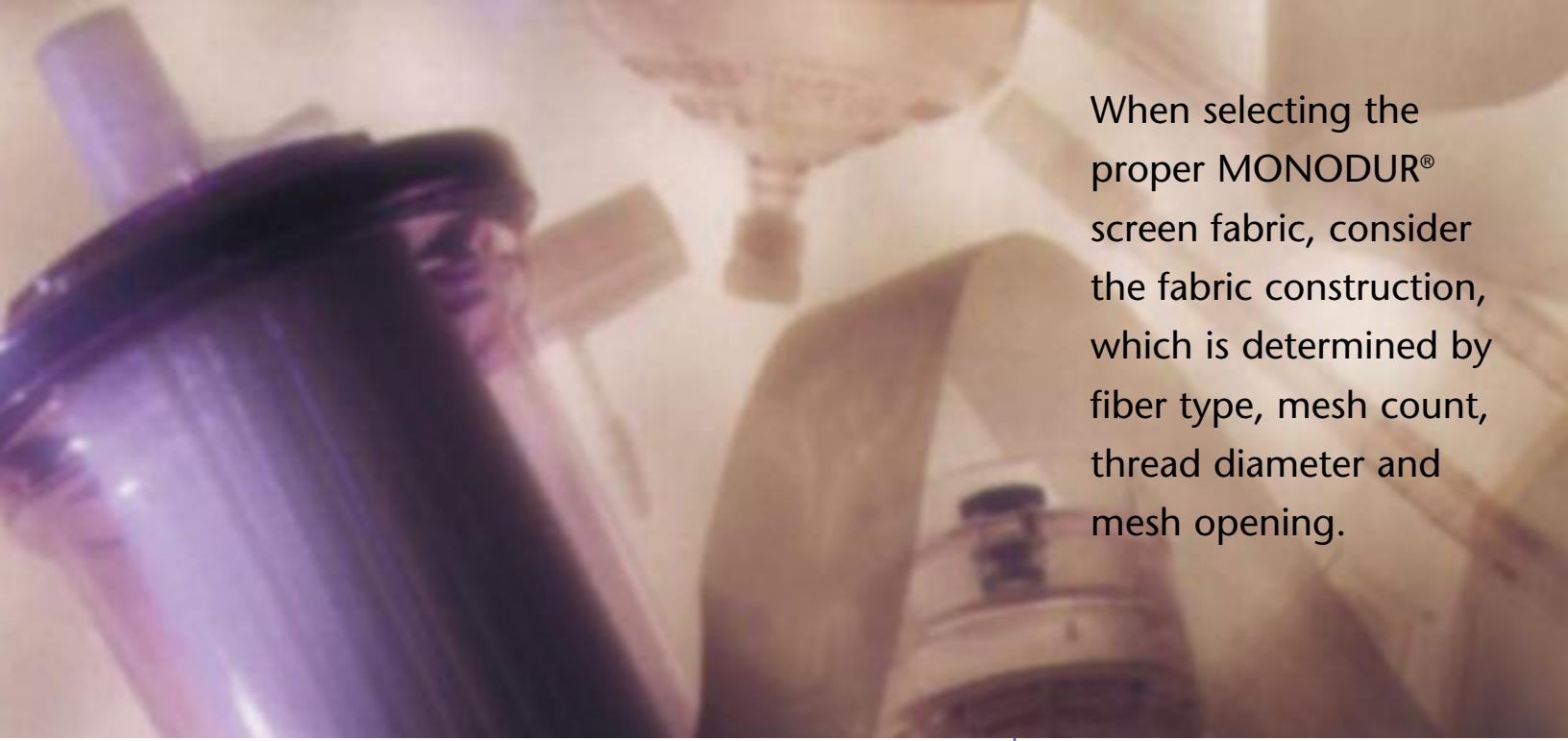
- Automotive
- Biomedical
- Chemical
- Food Processing
- Water Treatment

With MONODUR® screen fabrics, you are assured of the highest quality to meet your specific needs for screening, sifting, separating, filtering, straining and classifying. MONODUR® screen fabrics are designed to accommodate industry’s diverse requirements, with nearly unlimited capabilities.

## Choose The MONODUR® Screen Fabric That’s Right For You

MONODUR® screen fabrics are precision woven from a variety of synthetic monofilament yarns. This comprehensive line of monofilament fabrics encompass mesh openings from

2,000 microns down to openings as small as 1 micron. MONODUR® screen fabrics are proven successful, and give maximum service life while ensuring optimum performance.



When selecting the proper MONODUR® screen fabric, consider the fabric construction, which is determined by fiber type, mesh count, thread diameter and mesh opening.

### MONODUR® Fabric Construction

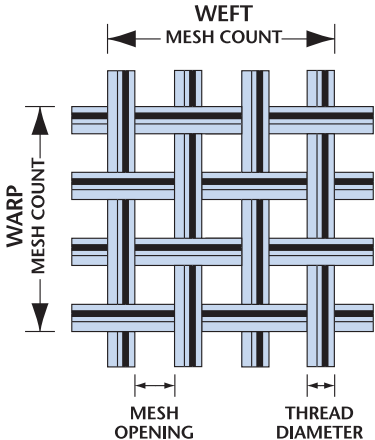
**Fiber Type** — is an important factor when choosing a fabric suitable for your application. Common considerations are working temperature, abrasion, and chemical compatibility, which may include the pH range of your application. See the fiber characteristics chart for fiber specifications and properties available with MONODUR® screen fabrics.

**Mesh Count** — is the number of threads per inch in the warp and weft direction of the fabric. The mesh count is identical in warp and weft for all MONODUR® fabrics.

**Thread Diameter** — is specified as the diameter of the thread in microns (thousandths of a millimeter). Yarn size in both the warp and weft directions are the same.

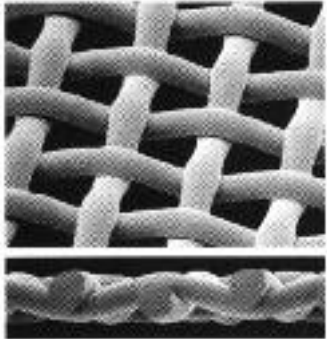
**Mesh Opening** — is the size or space between threads. The mesh opening is a result of the combination of the mesh count and the yarn size. Mesh opening determines the size or amount of material that will pass through the fabric.

### MONODUR® Fabric Construction



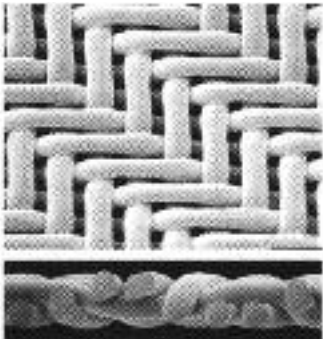
### Plain weave:

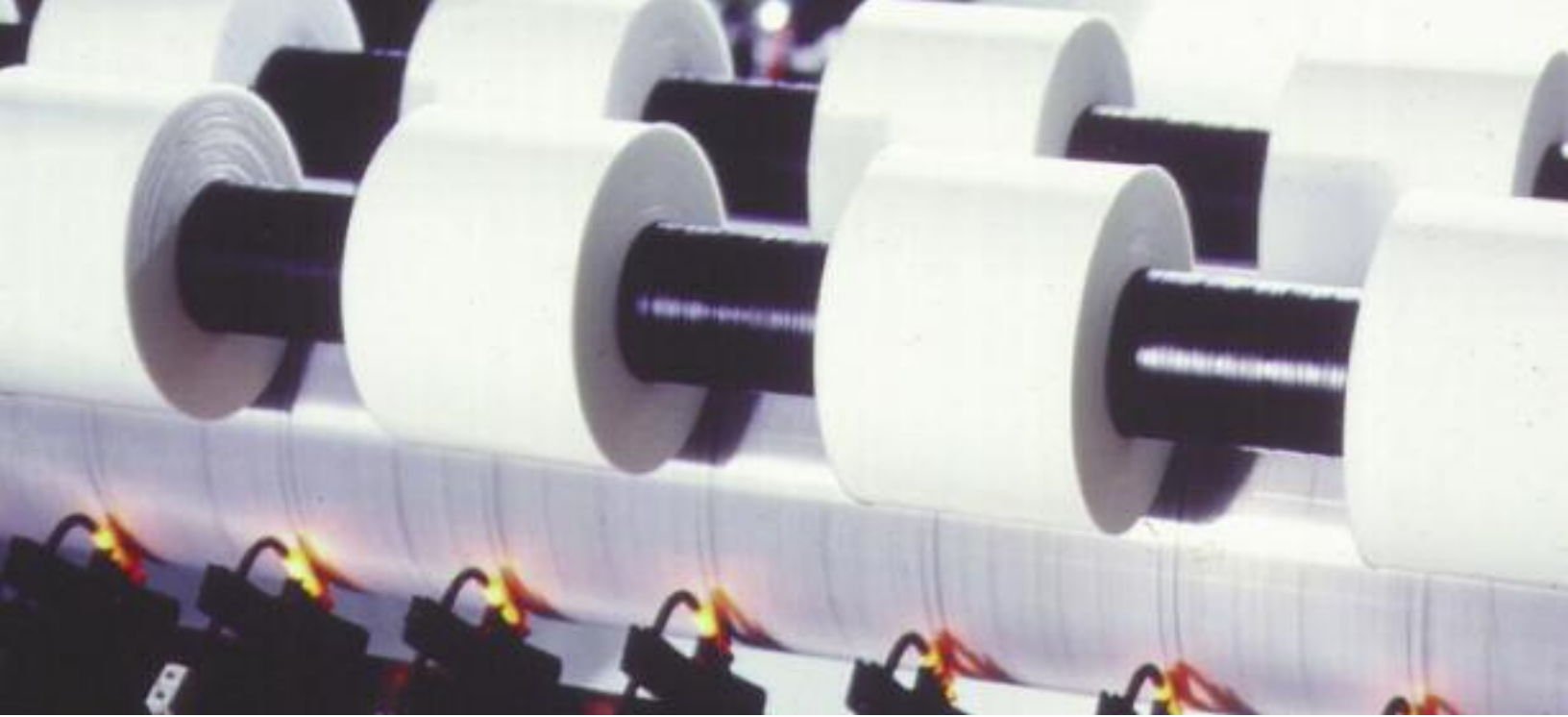
A plain weave is formed by passing warp and weft yarns alternatively over one another. Plain weaves have a relatively high open area which minimizes pressure drop ( $\Delta P$ ) in filtration applications. Since Monodur® fabrics are produced with equal yarn diameters and equal count in both the warp and weft directions, the mesh opening is square. For example, Pes 2000 has a mesh opening that measures 2000u x 2000u.



### Twill weave:

A twill weave is formed by passing the warp or weft fiber over two or more fibers in the opposite direction. Twill weaves facilitate the ease of cake solids release. Twill weaves may be necessary when the resulting mesh opening approximates the yarn diameter of the fabric construction. This maximizes the accuracy and consistency of the individual mesh opening.





**Your Sole  
Source For  
Custom  
Solutions To  
Unique  
Applications**

MONODUR® screen fabrics are designed and manufactured specifically to meet your unique requirements. Our in-house capabilities include value-added processing such as slitting and stamping. Medical finishing of MONODUR® fabrics controls pyrogen (LAL) levels.



IFC operates under the ISO 9000 quality system utilizing statistical process control procedures to ensure consistent product quality.



Screen fabrics for medical devices require the most stringent controls for cleanliness.

## FIBER CHARACTERISTICS

Fiber Type		<i>Nylon</i>	<i>Polyester</i>	<i>Polypropylene</i>	<i>Polyethylene</i>
		6/6	PET	PP	LDPE
Melting Temperature	C	254	257	168	115
	F	490	495	334	240
Density	g/c	1.14	1.38	0.91	0.92
Max. Continuous Use Temperature	C	85	132	85	75
	F	185	270	185	167
Max. Temp. Short Term	C	235	235	120	n/a
	F	455	455	248	n/a
Water Absorption	%	2.5	0.1-0.2	0.1-0.3	0.1-0.3
Saturation	%	8.5	0.2	0.03	0.03
Tenacity	gpd	4.0-7.5	4.0-7.5	4.0-7.0	4.0-7.0
Support Combustion		yes	yes	yes	yes
Biological Resistance		excel.	excel.	excel.	excel.
Alkali Resistance		good	poor	excel.	excel.
Resistant to Mineral Acids		poor	good	excel.	excel.
Resistant to Organic Acids		poor	fair	excel.	excel.
Resistant to Oxidizing Agent		fair	good	excel.	good
Effect of Organic Solvent		good	good	fair	fair
U/V Resistance		poor	good	poor	poor

**You Can  
Count On**



IFC has the know-how and experience to support you in selecting the appropriate MONODUR® screen fabric for optimum results in your application.

**Call** to speak to a member of our technical support team.

Style Number Opening / Open Area %	Mesh Opening		Mesh Count		Thread Diameter		Weight oz/yd <sup>2</sup>
	Inch	Micron	per Inch	per CM	Inch	Micron	
N 2000/58	0.0787	2000	9.7	3.8	0.0248	630	8.8
N 2000/52 HD	0.0787	2000	9.1	3.6	0.0295	750	11.4
N 1900/56	0.0748	1900	9.9	3.9	0.0248	630	8.6
N 1800/60	0.0709	1800	10.9	4.3	0.0209	530	7.4
N 1700/58	0.0669	1700	11.4	4.5	0.0209	530	7.1
N 1600/62	0.0630	1600	12.4	4.9	0.0169	430	5.2
N 1600/52 HD	0.0630	1600	11.4	4.5	0.0248	630	10.1
N 1500/60	0.0591	1500	13.2	5.2	0.0169	430	5.5
N 1400/59	0.0551	1400	14.0	5.5	0.0169	430	5.8
N 1400/49 HD	0.0551	1400	11.4	4.5	0.0236	600	11.1
N 1320/57	0.0520	1320	14.5	5.7	0.0169	430	5.9
N 1250/60	0.0492	1250	15.7	6.2	0.0146	370	5.1
N 1250/49 HD	0.0492	1250	14.2	5.6	0.0209	530	8.8
N 1180/58	0.0465	1180	16.3	6.4	0.0146	370	5.2
N 1120/57	0.0441	1120	17.0	6.7	0.0146	370	5.3
N 1060/55	0.0417	1060	17.8	7.0	0.0146	370	5.5
N 1000/58	0.0394	1000	19.3	7.6	0.0124	315	4.4
N 1000/49 HD	0.0394	1000	17.8	7.0	0.0169	430	7.3
N 950/56	0.0374	950	20.1	7.9	0.0124	315	4.5
N 900/55	0.0354	900	20.8	8.2	0.0124	315	4.7
N 850/53	0.0335	850	21.8	8.6	0.0124	315	4.8
N 800/47 HD	0.0315	800	21.8	8.6	0.0146	370	6.0
N 800/56	0.0315	800	23.9	9.4	0.0106	270	4.1
N 750/54	0.0295	750	24.9	9.8	0.0106	270	4.2
N 710/52	0.0280	710	25.9	10.2	0.0106	270	4.4
N 670/51	0.0264	670	26.9	10.6	0.0106	270	4.5
N 630/45 HD	0.0248	630	26.9	10.6	0.0124	315	5.9
N 630/49	0.0248	630	28.2	11.1	0.0106	270	4.7
N 600/64 L	0.0236	600	33.8	13.3	0.0059	150	2.2
N 600/48	0.0236	600	29.2	11.5	0.0106	270	4.9
N 560/53	0.0220	560	33.0	13.0	0.0083	210	3.5
N 530/51	0.0209	530	34.3	13.5	0.0083	210	3.6
N 500/50	0.0197	500	35.6	14.0	0.0083	210	3.7
N 500/42 HD	0.0197	500	33.0	13.0	0.0106	270	5.3
N 475/48	0.0187	475	37.3	14.7	0.0083	210	3.9
N 450/47	0.0177	450	38.6	15.2	0.0083	210	4.0
N 450/39 HD	0.0177	450	35.3	13.9	0.0106	270	5.7
N 425/45	0.0167	425	40.1	15.8	0.0083	210	4.1
N 400/47 L	0.0157	400	43.4	17.1	0.0071	180	3.6
N 400/43	0.0157	400	41.7	16.4	0.0083	210	4.3
N 400/36 HD	0.0157	400	37.8	14.9	0.0106	270	6.1
N 375/41	0.0148	375	43.4	17.1	0.0083	210	4.6
N 355/48	0.0140	355	49.3	19.4	0.0063	160	3.3
N 355/39 HD	0.0140	355	45.0	17.7	0.0083	210	4.5
N 335/46	0.0132	335	51.3	20.2	0.0063	160	3.4
N 315/44	0.0124	315	53.3	21.0	0.0063	160	3.5
N 315/36 HD	0.0124	315	48.5	19.1	0.0083	210	4.8
N 300/49	0.0118	300	58.9	23.2	0.0051	130	2.2
N 280/47	0.0110	280	62.0	24.4	0.0051	130	2.4
N 280/40 HD	0.0110	280	57.7	22.7	0.0063	160	3.9
N 265/47 L	0.0104	265	66.0	26	0.0039	100	1.8
N 265/45	0.0104	265	64.3	25.3	0.0051	130	2.5

Style Number Opening / Open Area %	Mesh Opening		Mesh Count		Thread Diameter		Weight oz/yd <sup>2</sup>
	Inch	Micron	per Inch	per CM	Inch	Micron	
N 265/31 HD	0.0104	265	53.3	21.0	0.0083	210	5.5
N 250/43	0.0098	250	66.8	26.3	0.0051	130	2.6
N 250/37 HD	0.0098	250	62.0	24.4	0.0063	160	4.1
N 236/42	0.0093	236	69.3	27.3	0.0051	130	2.7
N 224/46	0.0088	224	77.2	30.4	0.0041	105	2.2
N 224/40 HD	0.0088	224	71.6	28.2	0.0051	130	2.7
N 212/45	0.0083	212	80.0	31.5	0.0041	105	2.3
N 200/43	0.0079	200	83.3	32.8	0.0041	105	2.4
N 200/37 HD	0.0079	200	77.0	30.3	0.0051	130	2.9
N 190/50	0.0075	190	94.0	37.0	0.0031	80	1.5
N 180/48	0.0071	180	97.8	38.5	0.0031	80	1.6
N 180/40 HD	0.0071	180	89.2	35.1	0.0041	105	2.4
N 170/46	0.0067	170	102	40.0	0.0031	80	1.7
N 160/44	0.0063	160	107	42.0	0.0031	80	1.7
N 160/36 HD	0.0063	160	95.8	37.7	0.0041	105	2.6
N 150/43	0.0059	150	110	43.5	0.0031	80	1.7
N 140/40	0.0055	140	114	45.0	0.0031	80	1.8
N 132/39	0.0052	132	119	47.0	0.0031	80	1.9
N 125/37	0.0049	125	124	49	0.0031	80	1.9
N 118/36	0.0046	118	130	51	0.0031	80	2.0
N 112/34	0.0044	112	132	52	0.0031	80	2.1
N 106/40 L	0.0042	106	152	60	0.0024	60	1.7
N 106/34	0.0042	106	140	55	0.0030	75	1.8
N 100/33	0.0039	100	142	56	0.0030	75	1.8
N 95/31	0.0037	95	147	58	0.0030	75	1.9
N 90/30	0.0035	90	154	61	0.0030	75	1.9
N 85/43 L	0.0033	85	196	77	0.0018	45	0.9
N 85/28	0.0033	85	157	62	0.0030	75	2.0
N 80/27	0.0031	80	164	65	0.0030	75	2.0
N 75/36 HD	0.0030	75	203	80	0.0020	50	1.3
N 71/37	0.0028	71	218	86	0.0018	45	0.9
N 67/49 L	0.0026	67	264	104	0.0012	30	0.8
N 63/34	0.0025	63	236	93	0.0018	45	1.0
N 56/31	0.0022	56	254	100	0.0018	45	1.1
N 50/31	0.0020	50	295	116	0.0014	35	0.8
N 45/28	0.0018	45	305	120	0.0014	35	0.9
N 42/26	0.0017	42	310	122	0.0014	35	0.9
N 40/33 L	0.0016	40	363	143	0.0012	30	0.7
N 37/23	0.0015	37	328	129	0.0014	35	1.0
N 35/29 L	0.0014	35	389	153	0.0012	30	0.7
N 35/25	0.0014	35	363	143	0.0014	35	0.7
N 33/24	0.0013	33	373	147	0.0014	35	0.8
N 31/23	0.0012	31	386	152	0.0014	35	0.8
N 31/19 HD	0.0012	31	356	140	0.0016	40	1.1
N 30/25	0.0012	30	419	165	0.0012	30	0.9
N 28/17 HD	0.0011	28	381	150	0.0016	40	1.2
N 25/13 HD	0.0010	25	368	145	0.0018	45	1.2
N 22/16	0.0009	22	457	180	0.0012	30	1.0
N 20/14	0.0008	20	470	185	0.0012	30	1.1
N 15/9	0.0006	15	508	200	0.0012	30	1.3
N 15/7 HD	0.0006	15	432	170	0.0016	40	1.3

Style Number Opening / Open Area %	Mesh Opening		Mesh Count		Thread Diameter		Weight oz/yd <sup>2</sup>
	Inch	Micron	per Inch	per CM	Inch	Micron	
PES 2000/64	0.0787	2000	10.2	4.0	0.0197	500	7.8
PES 2000/58 HD	0.0787	2000	9.7	3.8	0.0248	630	10.7
PES 1600/61	0.0630	1600	12.4	4.9	0.0169	430	6.3
PES 1400/59	0.0551	1400	14.0	5.5	0.0169	430	7.0
PES 1400/55 HD	0.0551	1400	13.5	5.3	0.0197	500	10.3
PES 1250/60	0.0492	1250	15.7	6.2	0.0146	370	6.2
PES 1000/58	0.0394	1000	19.3	7.6	0.0128	325	5.4
PES 1000/39 HD	0.0394	1000	15.7	6.2	0.0197	500	12.7
PES 900/52	0.0354	900	20.3	8.0	0.0118	300	5.0
PES 800/57	0.0315	800	23.9	9.4	0.0106	270	5.0
PES 710/52	0.0280	710	25.9	10.2	0.0106	270	5.5
PES 630/49	0.0248	630	28.2	11.1	0.0106	270	5.3
PES 560/57	0.0220	560	34.3	13.5	0.0085	215	4.7
PES 500/47	0.0197	500	35.6	14.0	0.0091	230	5.1
PES 400/43	0.0157	400	41.7	16.4	0.0085	215	5.2
PES 400/38 HD	0.0157	400	39.1	15.4	0.0098	250	7.5
PES 355/48	0.0140	355	49.3	19.4	0.0063	160	4.6
PES 355/32 HD	0.0140	355	40.6	16.0	0.0098	250	8.4
PES 315/44	0.0124	315	53.3	21.0	0.0063	160	4.3
PES 315/39 HD	0.0124	315	50.8	20.0	0.0079	200	5.4
PES 280/47	0.0110	280	62.0	24.4	0.0051	130	2.7
PES 265/44	0.0104	265	63.5	25.0	0.0051	130	2.8
PES 250/43	0.0098	250	66.8	26.3	0.0051	130	2.9
PES 224/46	0.0088	224	77.2	30.4	0.0041	105	2.7
PES 212/38	0.0083	212	73.7	29.0	0.0051	130	3.2
PES 200/43	0.0079	200	83.3	32.8	0.0041	105	2.9
PES 180/44	0.0071	180	94.0	37.0	0.0035	90	2.7
PES 160/45	0.0063	160	107	42.0	0.0031	80	2.1
PES 140/40	0.0055	140	114	45.0	0.0031	80	2.2
PES 125/38	0.0049	125	124	49.0	0.0031	80	2.4
PES 118/43	0.0046	118	142	56.0	0.0024	60	1.5
PES 112/45	0.0044	112	152	60.0	0.0024	60	1.9
PES 100/31	0.0039	100	142	56.0	0.0028	70	2.2
PES 90/37	0.0035	90	173	68.0	0.0022	55	2.0
PES 80/38	0.0031	80	196	77.0	0.0019	48	1.2
PES 80/34 HD	0.0031	80	185	73.0	0.0022	55	2.1
PES 75/27 HD	0.0030	75	173	68.0	0.0028	70	2.1
PES 71/41	0.0028	71	229	90.0	0.0016	40	1.1
PES 71/32 HD	0.0028	71	203	80.0	0.0022	55	1.9
PES 63/37	0.0025	63	234	92.0	0.0016	40	1.2
PES 63/32 HD	0.0025	63	229	90.0	0.0019	48	2.0
PES 60/36	0.0024	60	254	100.0	0.0016	40	1.2
PES 56/38	0.0022	56	279	110.0	0.0014	35	1.0
PES 56/25 HD	0.0022	56	229	90.0	0.0022	55	2.1
PES 53/18 HD	0.0021	53	203	80.0	0.0028	70	2.9
PES 50/36	0.0020	50	305	120.0	0.0014	35	1.0
PES 50/30 HD	0.0020	50	279	110.0	0.0016	40	1.3
PES 45/29 HD	0.0018	45	305	120.0	0.0016	40	1.4
PES 40/28	0.0016	40	338	133.0	0.0014	35	1.2
PES 40/25 HD	0.0016	40	318	125.0	0.0016	40	1.5
PES 37/11 HD	0.0015	37	229	90.0	0.0028	70	3.1
PES 35/25	0.0014	35	361	142.0	0.0014	35	1.2
PES 35/21 HD	0.0014	35	330	130.0	0.0016	40	1.5
PES 30/25	0.0012	30	419	165.0	0.0012	30	1.2
PES 30/21 HD	0.0012	30	381	150.0	0.0014	35	1.1
PES 22/16	0.0009	22	457	180.0	0.0012	30	1.6
PES 20/15	0.0008	20	470	185.0	0.0012	30	1.3
PES 15/9	0.0006	15	508	200.0	0.0014	35	1.4
PES 10/4 HD	0.0004	10	508	200.0	0.0016	40	2.4
PES 5/1.2 HD	0.0002	5	559	220.0	0.0016	40	2.6
PES 3/0.4 HD	0.0001	3	559	220.0	0.0017	42	2.6

Style Number Opening / Open Area %	Mesh Opening		Mesh Count		Thread Diameter		Weight oz/yd <sup>2</sup>
	Inch	Micron	per Inch	per CM	Inch	Micron	
PE 1000/59	0.0394	1000	19.6	7.7	0.0118	300	3.0
PE 400/46	0.0157	400	43.2	17.0	0.0079	200	3.2
PE 300/26	0.0118	300	43.2	17.0	0.0079	200	3.9
PE 250/39	0.0098	250	63.5	25.0	0.0059	150	2.9

# Monodur® Polypropylene

Style Number Opening / Open Area %	Mesh Opening		Mesh Count		Thread Diameter		Weight oz/yd <sup>2</sup>
	Inch	Micron	per Inch	per CM	Inch	Micron	
PP 4000/58	0.1575	4000	4.8	1.9	0.0472	1200	12.1
PP 400/31	0.0157	400	35.6	14	0.0118	300	6.2
PP 200/23	0.0079	200	61.0	24	0.0079	200	4.1
PP 150/25	0.0059	150	83.8	33	0.0047	120	2.7

# Monodur® Order Instructions

Ordering Monodur® Precision Monofilament Fabrics is simple. Please indicate the Fiber Nylon (N), Polyester (PES), Polypropylene (PP) or Polyethylene (PE), and the Monodur® style number listed in the first column of the specification sheet. Example: **Monodur® N200/43**. Please also indicate the width. Our standard width for all Monodur® fabrics is 40". The majority of fabrics are also available in 60" and 80". You may request a price list, which contains all standard widths available.

### Special Orders

IFC has a long tradition in customizing products to the specific needs of its customers. Special Monodur® constructions and widths are available based on minimum order quantities. If your application requires a fabric not listed, please call us for a special quotation. **1-800-328-3036**

# Weaving excellence into a world of products

IFC – specialists in industrial textiles for more than 40 years.

With research and production facilities on two continents, we literally span the globe to provide fabrics that meet your needs—from optimum production conditions to assuring the highest standard of manufacturing excellence.

“Weaving excellence into a world of products” is more than our slogan, it’s our commitment.



## **Ammeraal Beltech**

Process and Conveyor Belts/ Power Transmission Belts  
[www.ammeraal.com](http://www.ammeraal.com)

## **Verseidag Indutex**

Coated Fabrics/Composite Materials  
[www.vsindutex.de](http://www.vsindutex.de)

## **Dimension Polyant**

Sailcloth  
[www.dimension-polyant.com](http://www.dimension-polyant.com)

## **Verseidag Techfab**

Screen and Filter Technology  
[www.techfab.de](http://www.techfab.de)

### Product Lines:

- **Filtratex™**  
Filtration Fabrics
- **Durotex™**  
Dewatering Belts
- **Monodur®**  
Screen Fabrics
- **Monoprint®**  
Screen Printing Fabrics



## **INDUSTRIAL FABRICS CORPORATION**

7160 Northland Circle • Minneapolis, MN 55428  
763-535-3220 • 800-328-3036 • Fax: 763-535-6040  
[www.ifcfabrics.com](http://www.ifcfabrics.com) • [sales@ifcfabrics.com](mailto:sales@ifcfabrics.com)

